

# W2 Waterdrive

Water driven rural development in the Baltic Sea Region

Partner meeting 17. June 2020

Reduce nutrient loadings from agricultural landscapes in a context of ecosystem productivity and resource efficient growth considering climate change.

STØTTET AF

**Promille**afgiftsfonden for landbrug



## Activity Group 2.1 Cross-sector local participation

Learnings from FOCUS GROUPS + SUCCESS-STORIES + CASE AREAS



Action- and investment plans based on experience from case areas – the next 6 months 2020



Recommendations and strategies to be incorporated in Waterdrive



Initiate launching of the Participatory toolbox – advisor test in the next 6 months, 2020

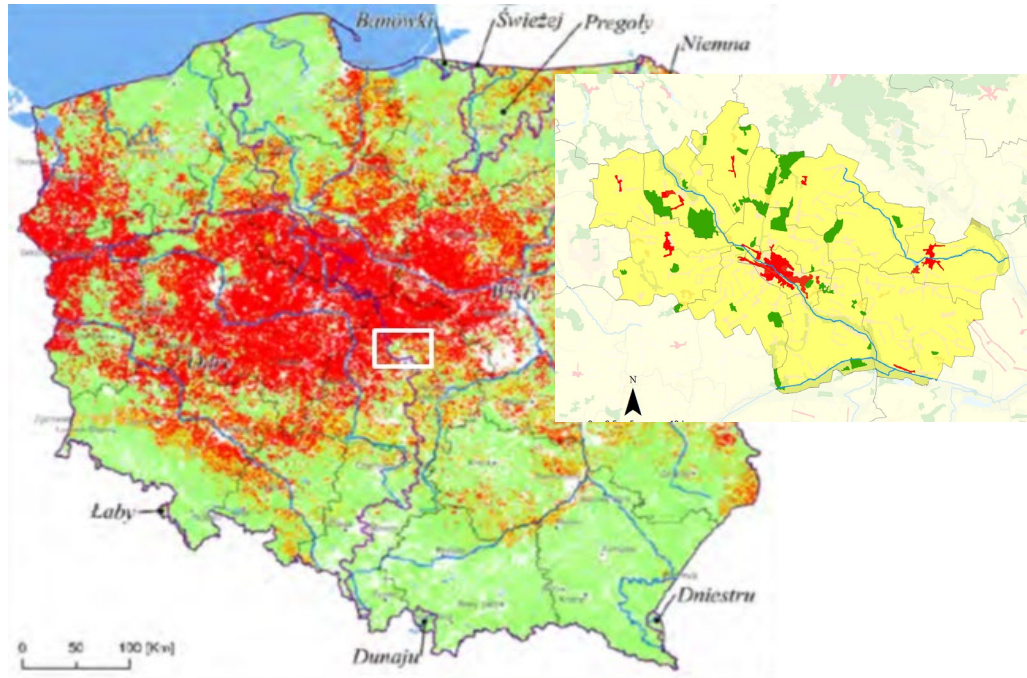
Activity group 2.2 Leadership manual – advisor test in the next 6 months, 2020

Activity group 2.3: New Services catalog completet december 2020

**Follow on the new link:** [https://www.landbrugsinfo.dk/Public/9/E/7/natur\\_vandmiljo\\_waterdrive](https://www.landbrugsinfo.dk/Public/9/E/7/natur_vandmiljo_waterdrive)

## **POLAND – drought and water retention in the Kutno County case area, Bedlno Commune by Katarzyna Izydorczyk**

“Reconstruction of the drainage systems and the whole agricultural area towards increased water retention in the landscape”

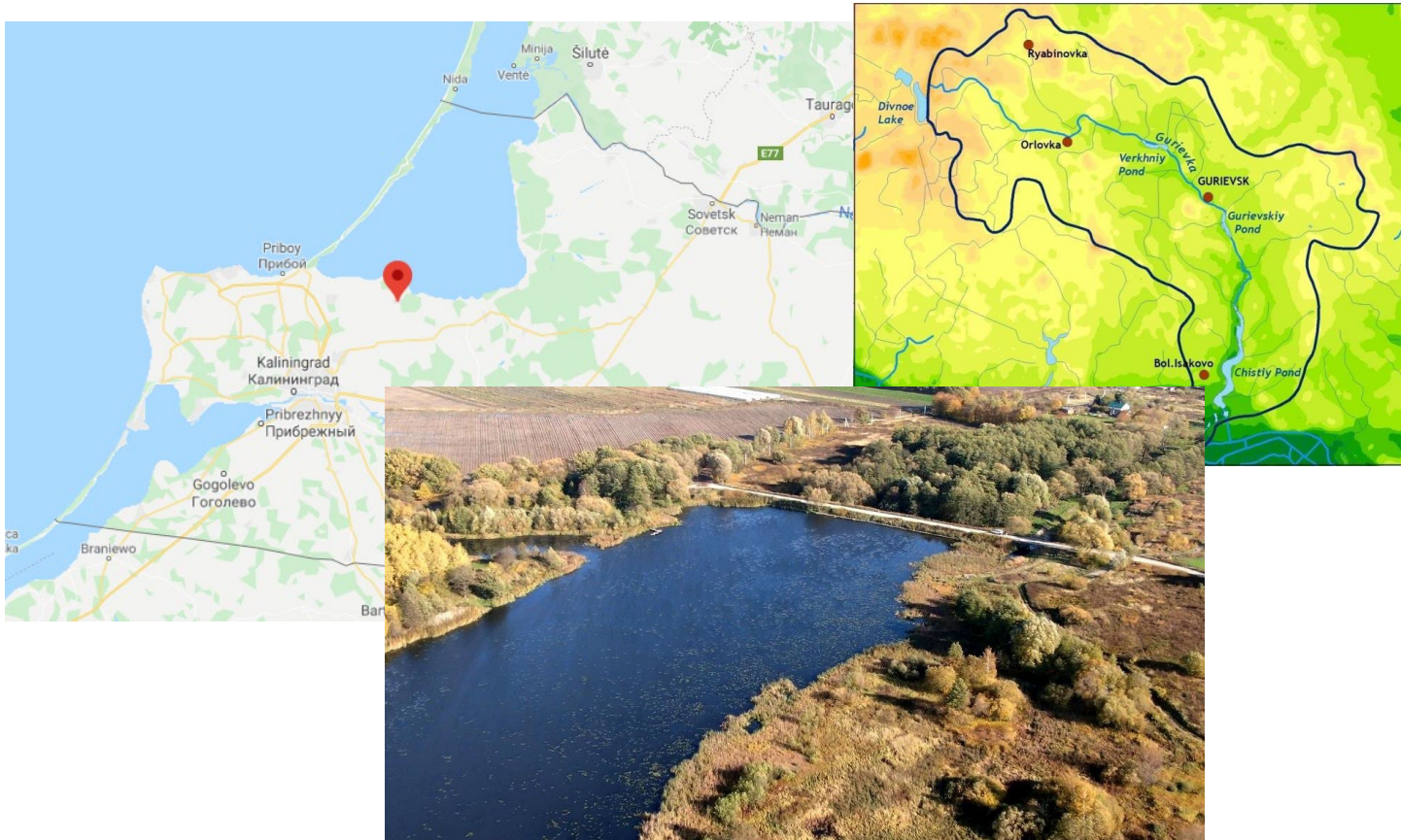


### **Focus on a wide palette of different water- and landscape retention measures**

Reconstruction of drainage systems towards amelioration of soils, direct sowing, cultivation of catch crops and soil embedding crops, buffer zones, afforestation of selected, unproductive lands, establishing shelterbelts, midfields bushes and trees, establishing and protection of ecotone meadows and wetlands, protection and establishing of small water bodies and deepening of canals.

## Russia – reducing nutrient load from agriculture river Gurjevka case area, Kaliningrad, Russia by Irina Popova

**“Cooperation and communication between all partners are very important and need much more attention in the future in cross-sector cooperation. Communication makes it easier to solve the problem.”**



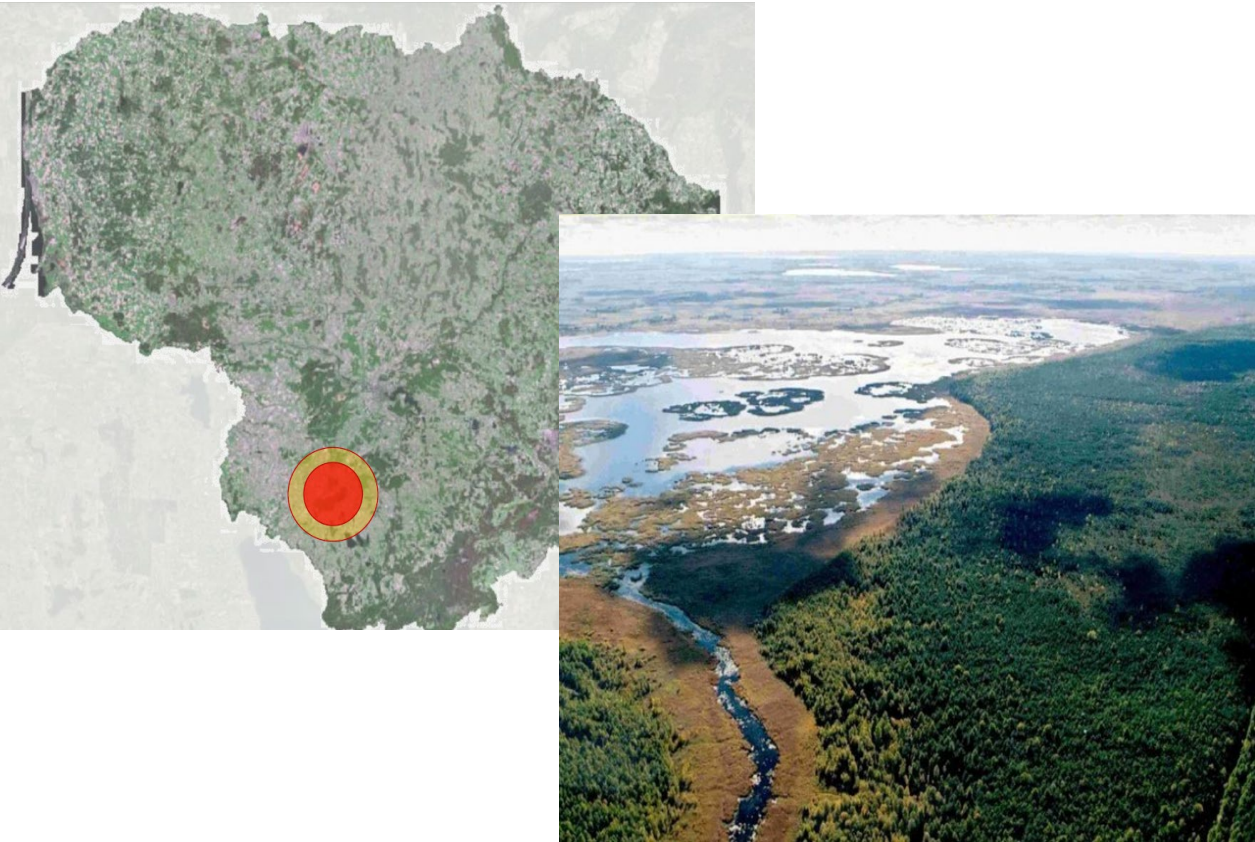
New constructed wetlands





## Lithuania – protecting the Nature 2000 site Zuvintas Reserve by water management and pollution reduction measures *by Elvyra Miksyte*

*“There is a lack of funding for local projects, development of leadership skills and water management competences”*



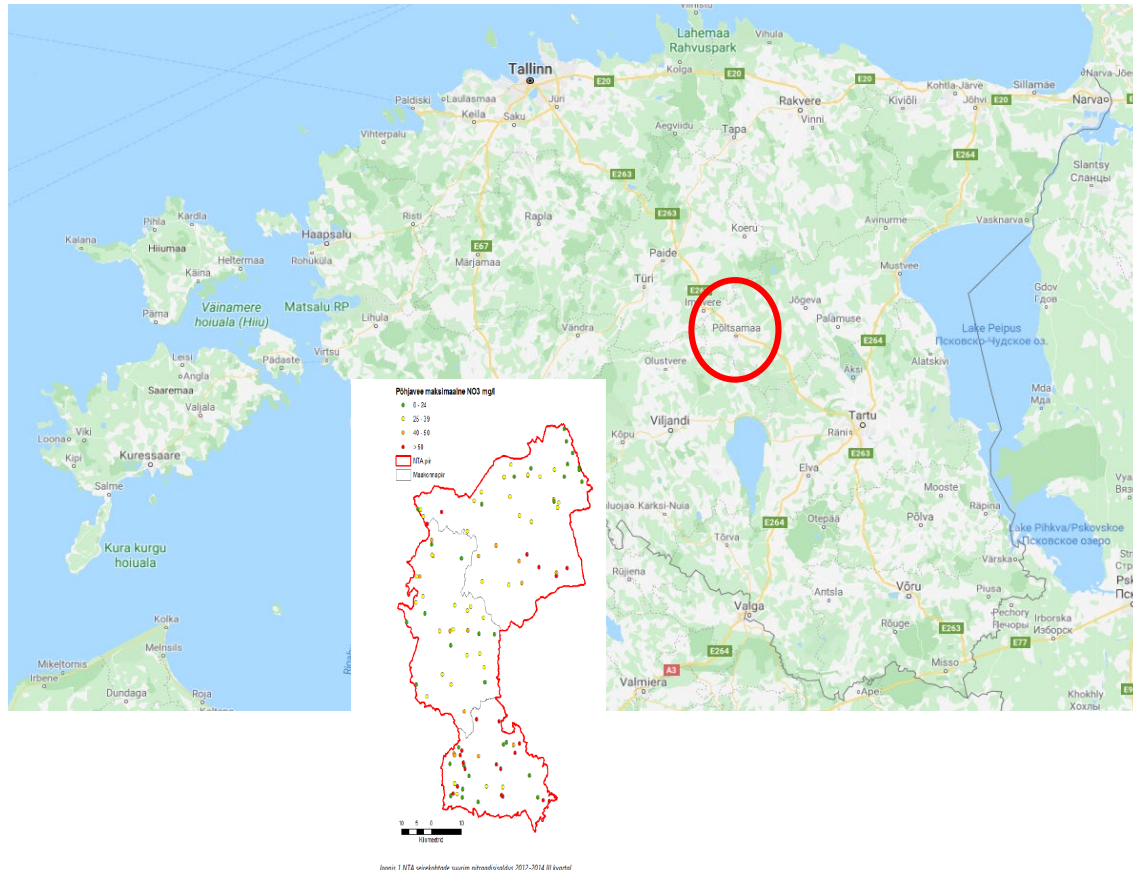
A lot of species found in the area are in the Birds Directive Annex 1 and the Habitats Directive Annex 1 and 2.

A part of the reserve is protected by the RAMSAR convention since 1993

In 2011 the reserve was enlisted into UNESCO's Man and the Biosphere Programme.

## Estonia – Focus on strategy in the Nitrate vulnerable zone NVZ in the Põltsamaa case area *by Kaja Peterson*

“We need a change in understanding of what win-win solutions are and how to motivate farmers to adopt agri-environmental measures.”



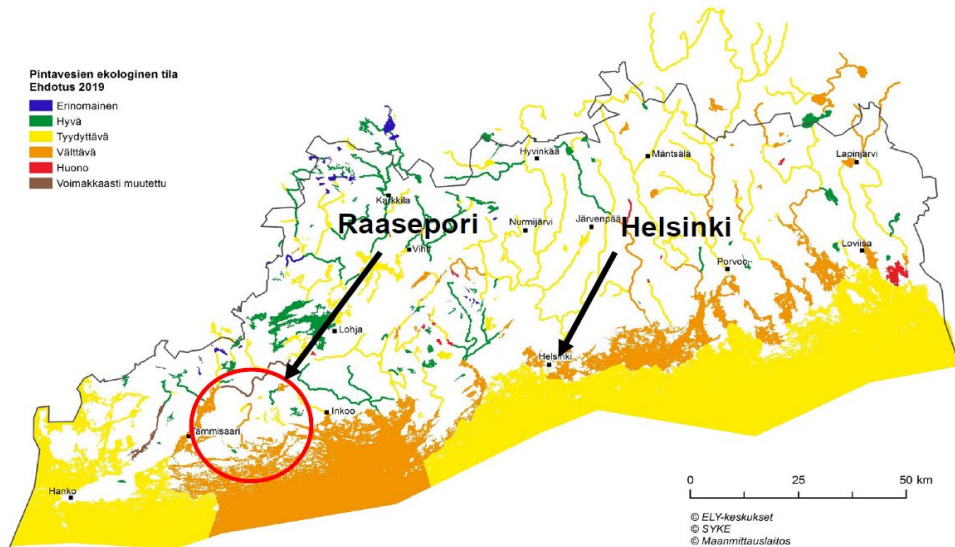
The pilot case are targeted the water policy and the effectiveness of implementation of the policy (action plan).

*The most important is to bring together the decision makers from different ministries and agencies and discuss the water issues in agriculture beyond their administrative borders.*

This was the ultimate aim of establishing of the NVZ task force in Estonia.

## Finland – drainage and leaching of nutrients – a catchment based holistic approach. Southern Finland drainage case area *by Mikko Ortamala*

“We need to develop processes, methods and practices where water management and -protection can be planned in a multisector and including manner. Only this way can we ensure that the multiple objectives are met in a sustainable way – a catchment based holistic approach”.



Implementation:

Wetlands

Two-step ditches

Constructed wetlands for management of agricultural waters urban runoff and biodiversity.

Down streams fisheries structures and city infrastructure are also taken into account.



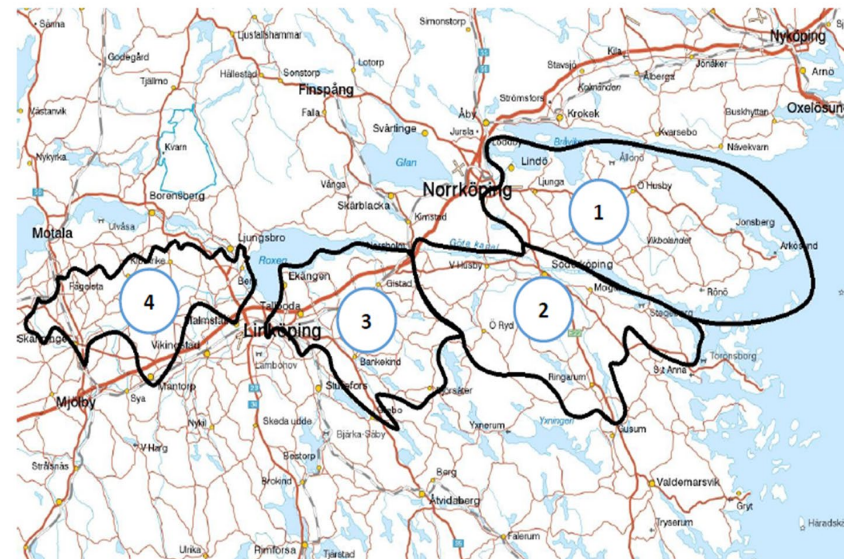
## Sweden - Result-based payments scheme case area by Emma Svensson

*A new approach: “Engagement of farmers in development of agri-environmental schemes”*

The aim in the case area is to develop the concept of agri-environmental schemes by involving farmers and local stakeholders. Develop and test tools and models for design and implementation of result based schemes and understand farmers decisions in relation to agri-environmental schemes



Karta över de prioriterade områdena i Östergötland



1. Vikbolandet 2. Söderköpingsån 3. Söder om Roxen 4. Svartån



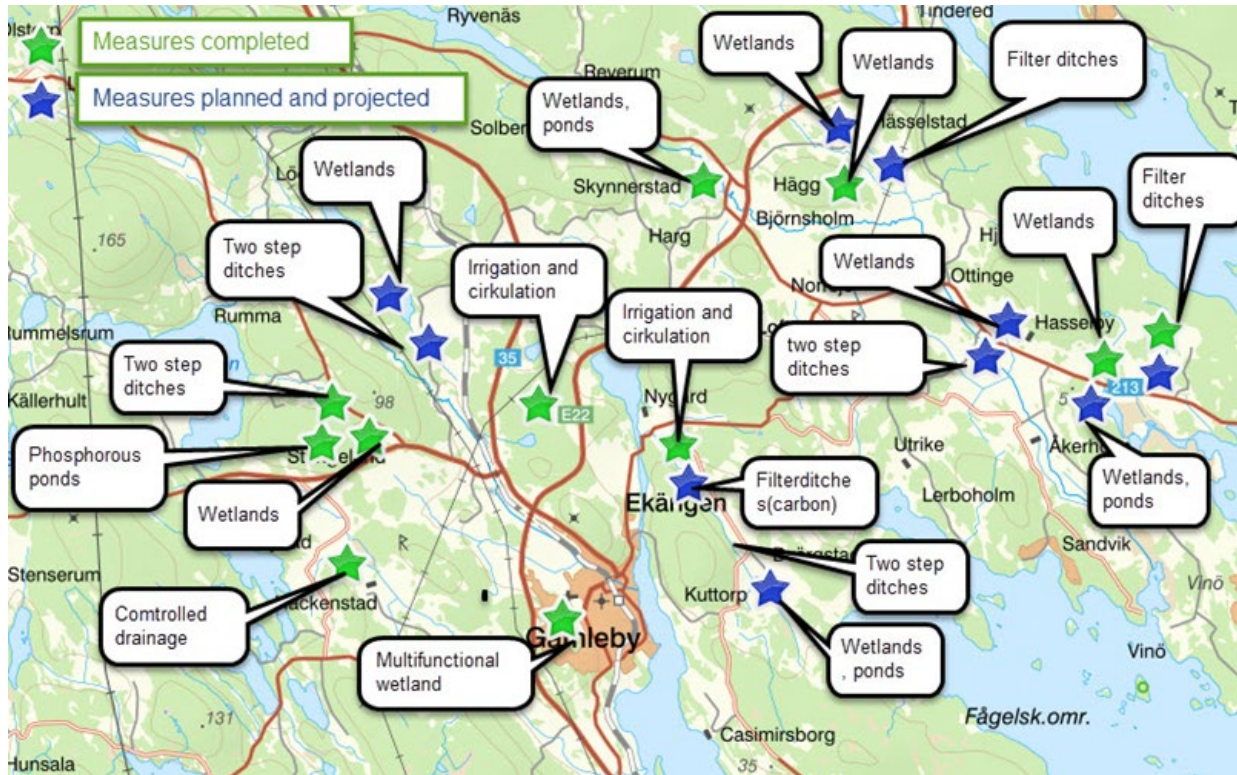
## Sweden – joint nutrient leakage planning in Västervik case area *by Gun Lindberg*



Large scale local implementation of environmental measures in combination with clear benefits for the farmers in relation to drainage, soil sampling and structural liming. Measures that all secure high yields.



*“Do the right thing at the right place”*

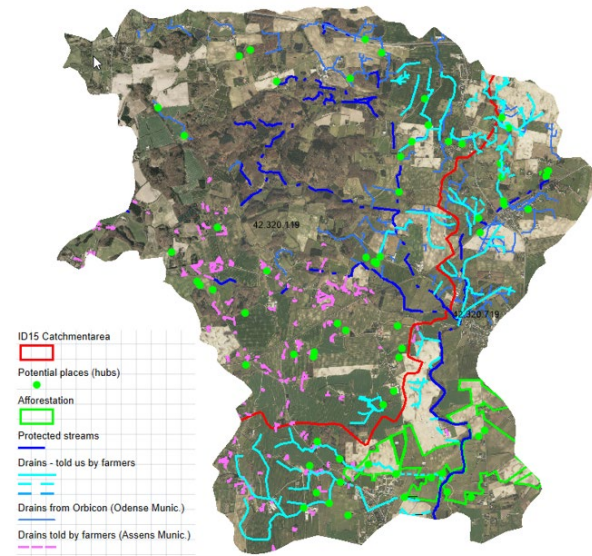
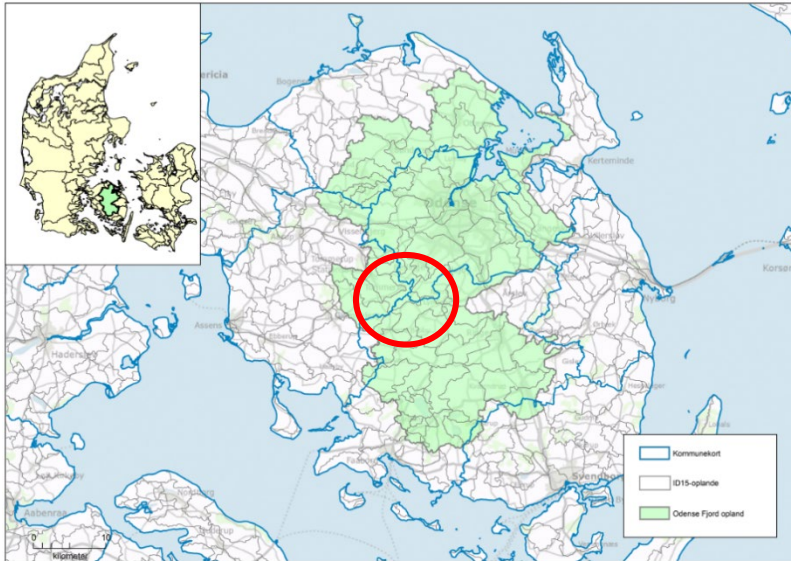


The environmental measures are soil mapping, structure liming, small wetlands, twostep ditches and filter ditches. More measures are planned during 2020-2021 in Dynestad and Lofta area, mostly filter ditches with lime or carbon, twostep ditches, small wetlands and irrigation with water from a eutrophicated bay.



## Denmark - stop leaching of nutrients to Odense Fjord by catchment officer Anne Sloth, Flemming Gertz & Frank Bondgaard, SEGES

“The right incentive structures and financial support must be in place before environmental measures can be implemented”



The tasks in the catchment in Waterdrive is wetlands, rewetting organic soils, constructed wetlands CW, constructed wetlands with woodchips, intelligent bufferzones IBZ and forrest.



## Activity Group 2.1 Participatory toolbox

Working group established: Lead Franziska, Gun, Olle, Maciej, Elvyra, Matilda

The Toolbox will assist during the facilitation of projects by indicating helpful tools and methods during different project stages.

The Toolbox will provide assistance for facilitators of (water management) projects dealing with cross-sector stakeholders and aiming for increased cooperation and participation.





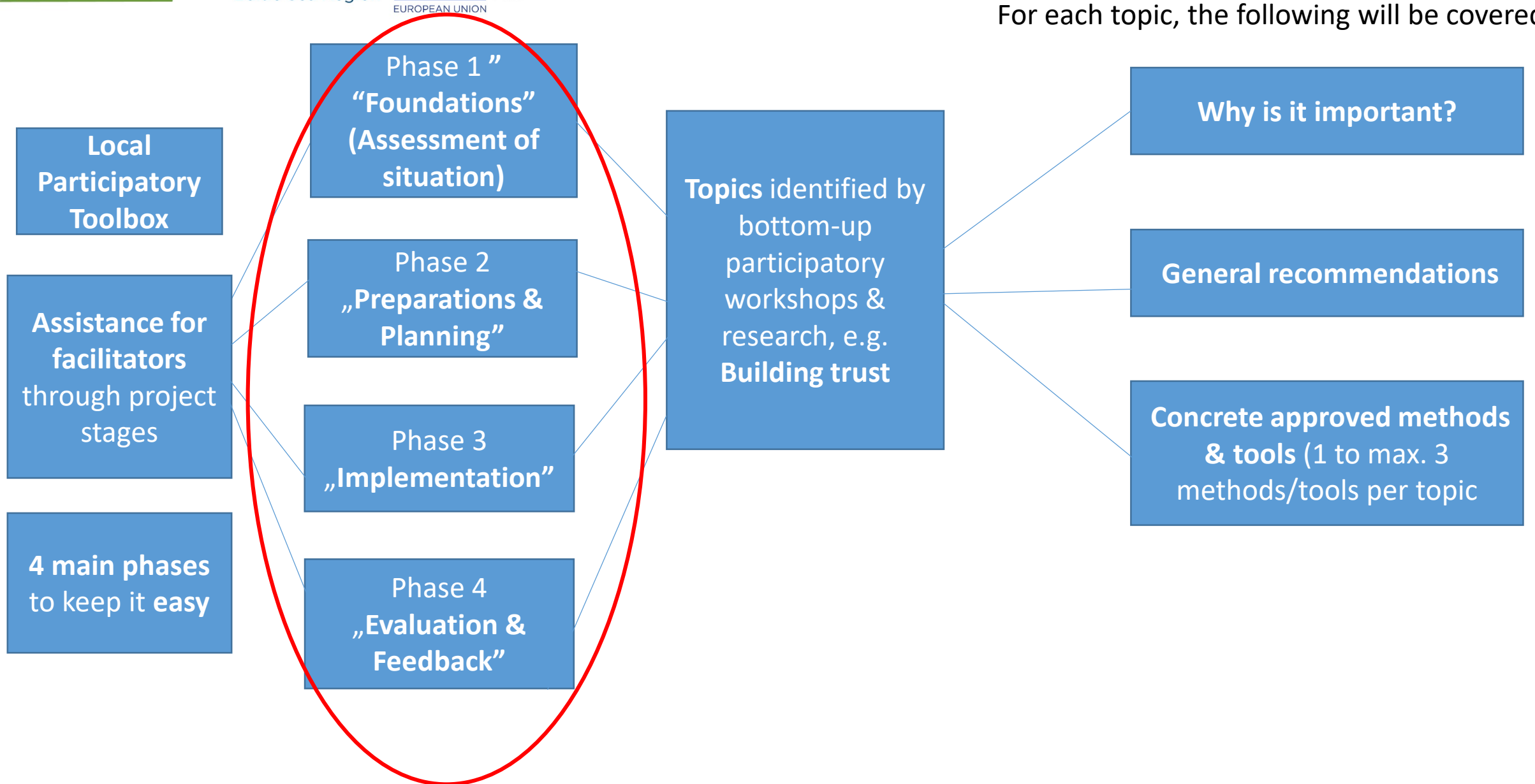
## Objectives of GA 2.1 „Local Participatory Toolbox“

- Providing assistance for facilitators dealing with cross-sector stakeholders
- Focusing on the sociological context
- Including methods/tools that facilitate cooperation
- Including methods/tools to achieve better participation
- Assistance to identify and plan actions in a participatory way
- Helping to identify joint objectives

## **Actions so far: What has been done until now?**

- Research from former projects, scientific journals, websites etc.
- Several participatory workshops
- Analysis and evaluation of data from workshops
- Presentations and discussions of results
- Collection of methods and tools has started
- First concept/structure of toolbox is finished





## Activity Group 2.3 New services

Working group established: Lead Flemming, Janusz, Matilda, Mikko, Olle, Magnus, Audronė

- make a catalog simple with good graphics – easy for decisions makers to understand
- describe new services needed in connection with the gaps in governance structures for each country
- 2-4 pages pr country

Planned workshop in CPH canceled

Instead: 3 skype meetings: 14th May + 2th June + 15th June

Plan:

- make a template before summer/ (or September)
- Involve all countries by having a workshop/session for all countries after summer to get each country started to fill in the template
- finish catalog begin 2021